



THE WOODVILLE

# TECHNICAL SPECIFICATIONS

Technical Manager: Roland Baker  
[roland.baker@gravesham.gov.uk](mailto:roland.baker@gravesham.gov.uk)

01474 564 422 Extension 7266

[www.woodville.co.uk](http://www.woodville.co.uk)

# LIGHTING OPERATION

- ETC Ion Xe-20
- ETC Colour Source Dimmers – 72x 15amp channels
- DMX Universe x 3
- Showtec Infinity iW-1915 x 12
- Showtec Infinity iW-1915 Pixel x 4
- Showled Chameleon M24 Starcloth
- ETC Source Four Zoom x 20
- Par 64 x 44
- 1K Fresnel x 8
- 2K Fresnel x 4
- Chauvet Rogue R2E Spot x 8
- Prolights Studio COB FC 8CH x 10

# SOUND OPERATION

- Allen & Heath QU-24 Sound Desk
- Allen & Heath AR2412 Audio Rack
- K-Array KMT21 Active Subwoofers x 2
- K-Array KP102i Columns x 4
- K-Array Redline KH15 Mid-Highs as Circle Delays x 2
- Yamaha DXR12 Monitors x4
- Apple Mac Mini
- Tascam CD-200i CD Players x 2
- Tascam CD-RW900SL
- Behringer Ultra DI Box x 4 / EMO DI Box / Soundlab G025N Box x 6
- QSC 7.1 Surround Sound System for Cinema – 23 speakers
- Datasat AP20 Sound Processor for Cinema

# VISUAL

- Silver Cinema Screen – 7.4m wide x 4.3 m high
- Halfstage Projection Screen – 4.9 m wide x 2.85 m high
- Cyclorama as alternative screen at back of stage
- Offstage Stage Left Screen – 2.1 m wide x 1.2 m high
- SANYO XGA Projector plus x 3 Laptops
- Barco DP2K-10s Digital Cinema Projector

- Doremi Showvault Server 6TB / Doremi Integrated Media Block
- Osram 2K Projector Lamp

## POWER

ALL POWER STAGE LEFT UNLESS OTHERWISE SPECIFIED

- 125A 3-Phase\*
- 63A 3-Phase
- 63A Single Phase – can split into 6 x 32A sockets
- 32A Single Phase x 2
- 13A Sockets throughout auditorium  
Suitable for various operating positions
- \*Distro – 21 x 16a Outlets, 3 x 32a (& 32a 3 Phase Outlet), 1 x 63a (63a 3 Phase Outlet)

## PORTABLE STAGING

**Prolyte – LiteDeck**

8 x 8ft x 4ft

## PARKING

THERE IS LIMITED OFF-ROAD PARKING AVAILABLE ALONGSIDE OUR DOCK DOOR ACCESS AREA. THE SPACES ARE PAVEMENT MOUNTED, ACCESSED VIA A DROP KERB AND DROP KERB EXIT AT THE FAR END. THIS CAN ACCOMMODATE TOUR BUSES AND TRUCKS BUT PLEASE CHECK VEHICLE SIZING WITH THE VENUE BEFORE ARRIVAL.



# WHAT THREE WORDS

- Dock Doors - ///spins.assure.major
- Parking Corner - ///diner.bleak.easy
- Stage Door - ///arrive.legend.foods

# STAGE AND ACCESS

▪ STAGE TO APRON	11m wide x 11.5 deep
▪ STAGE TO TABS	11M wide x 8.5m deep
▪ SAFETY CURTAIN	11m wide x 8.2m high
▪ ORCHESTRA PIT (uncovered)	8m wide x 2.4m deep
▪ PROSCENIUM OPENING	Min 7.2m x 3.6m high
▪ PROSCENIUM OPENING	Max 9m wide x 5.5m high
▪ DOCK DOORS ONTO LOADING BAY	2.7m x 3.65m
▪ STAGE HEIGHT TO GRID	15.2m
▪ STAGE RIGHT WING	1.2m wide
▪ STAGE LEFT WING	1.5m wide
▪ STAGE RIGHT LOADING BAY	3.5m x 3.5m deep

# AUDITORIUM – MAIN HOUSE

## HARLEQUIN DANCE FLOOR

14.35 METRES WIDE X 12.86 METRES DEEP

## REAR STALLS

9.7 METRES WIDE X 9.2 METRES DEEP

## WEST STALLS

18 METRES WIDE X 4.7 METRES DEEP

## EAST STALLS

18 METRES WIDE X 2.7 METRES DEEP

# FLYING PLOT

BAR	TYPE	DISTANCE FROM CURTAIN	USAGE NOTES
	<b>IRON CURTAIN</b>	<b>0 MM</b>	<b>ALL BARS LISTED ARE UPSTAGE FROM HERE</b>
H1	HEMP		PROSCENIUM LEGS
BAR 1	COUNTERWEIGHT	450MM	HOUSE TABS
BAR 2	COUNTERWEIGHT	450MM	PROS BORDER
H2	HEMP	1100MM	TOO CLOSE TO LX1 FOR HIRE UNLESS LX1 IS UNBRAILED
LX1	WINCH	1205MM	STAGE WASHES & SPOTS
BAR 3	COUNTERWEIGHT	1800MM	SCREEN
BAR 4	COUNTERWEIGHT	2000MM	TOO CLOSE TO SCREEN FOR HIRE USE
BAR 5	COUNTERWEIGHT	2200MM	
BAR 6	COUNTERWEIGHT	2400MM	BLACK TABS
H3	HEMP	2500MM	BORDER
BAR 7	COUNTERWEIGHT	2850MM	
BAR 8	COUNTERWEIGHT	3150MM	LX2 PAR CANS
BAR 9	COUNTERWEIGHT	3400MM	
BAR 10	COUNTERWEIGHT	3700MM	BLACK TABS
BAR 11	COUNTERWEIGHT	3900MM	
BAR 12	COUNTERWEIGHT	4050MM	BORDER
H4	HEMP	4400MM	LEGS
BAR 13	COUNTERWEIGHT	4600MM	
BAR14	COUNTERWEIGHT	4800MM	
LX3	WINCH	5000MM	STAGE WASHES & SPOTS
BAR 15	COUNTERWEIGHT	5200MM	
BAR 16	COUNTERWEIGHT	5400MM	
BAR 17	COUNTERWEIGHT	5500MM	
BAR 18	COUNTERWEIGHT	5650MM	BLACK TABS
BAR 19	COUNTERWEIGHT	5850MM	
BAR 20	COUNTERWEIGHT	6050MM	
H5	HEMP	6850MM	LEGS (TWO SMALL BARS, 2 LINES EACH)
H6	HEMP	6900MM	BORDER
LX 4	WINCH	7350MM	PAR CANS
BAR 21	COUNTERWEIGHT	7550MM	
BAR 22	COUNTERWEIGHT	7750MM	
BAR 23	COUNTERWEIGHT	7950MM	STAR CLOTH
BAR 24	COUNTERWEIGHT	8250MM	CYC
	WALL	8700MM	

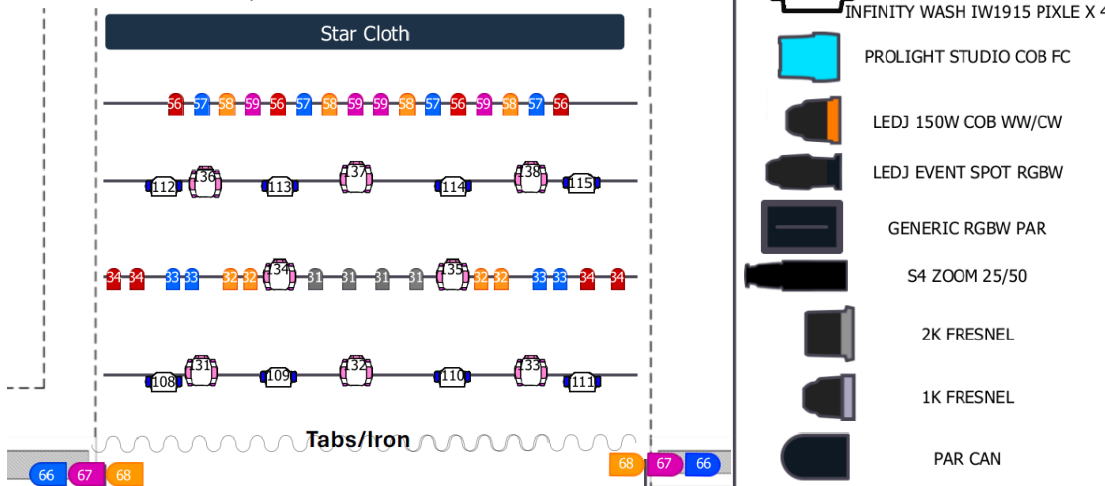
# LIGHTING GRID – MAIN HOUSE

## Stage Plan

Universe 1 – House Lights, Generics, Star Cloth, Hazer

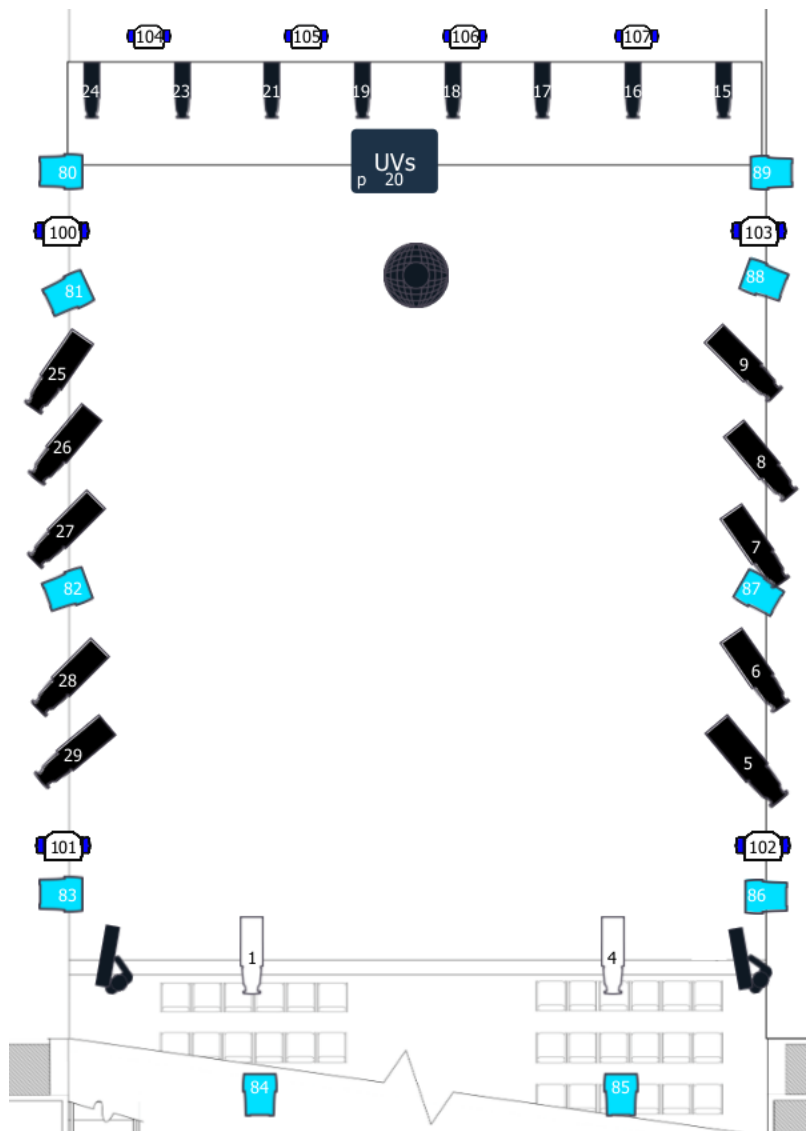
Universe 2 – Washes




Universe 3 - Spots



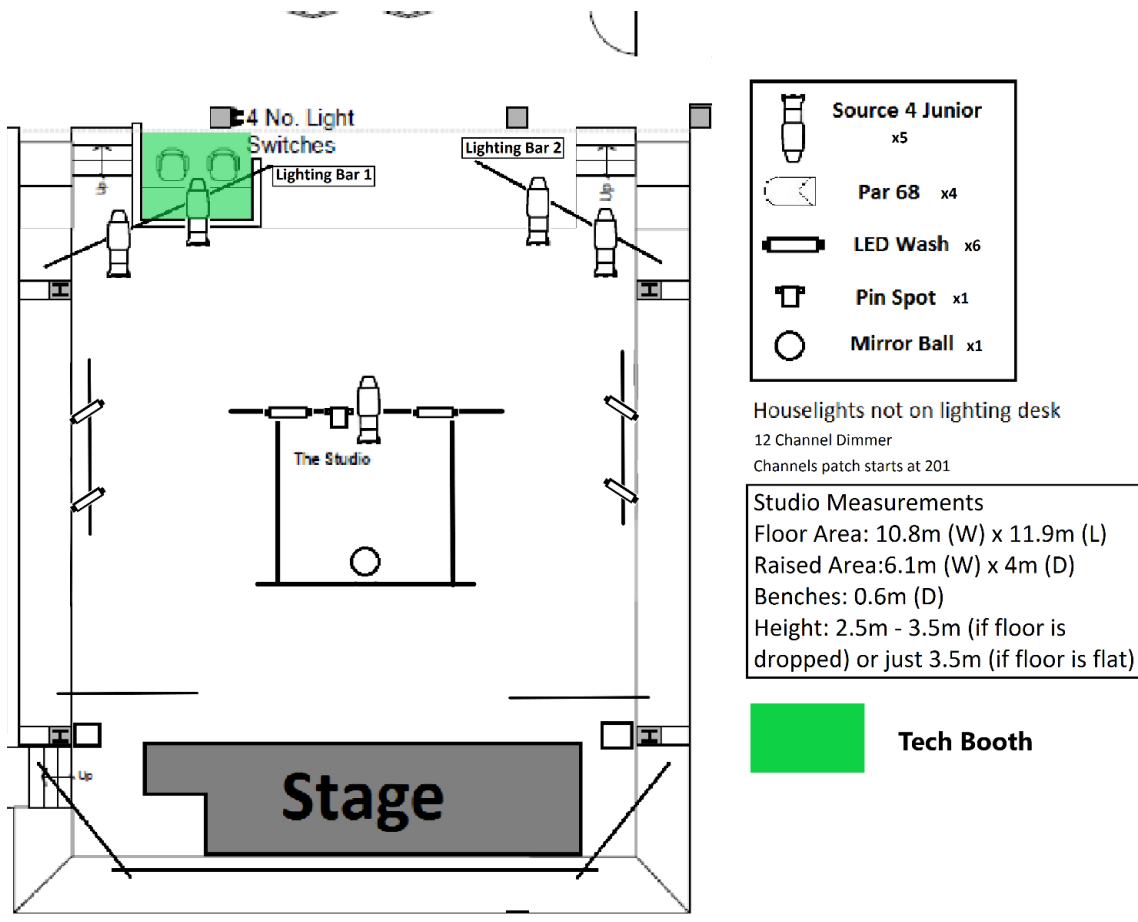
## Notes:

- Unique 2.1 Hazer – 1/480
- Mirrorball is run of 13amp Hot Power
- 4 parcans to a channel on stage
- Ilse lights need to be parked on throughout performance at ~50%



-  ROUGE R2E SPOTS
-  INFINITY WASH IW1915 X 12  
INFINITY WASH IW1915 PIXLE X 4
-  PROLIGHT STUDIO COB FC
-  LEDJ 150W COB WW/CW
-  LEDJ EVENT SPOT RGBW
-  GENERIC RGBW PAR
-  S4 ZOOM 25/50
-  2K FRESNEL
-  1K FRESNEL
-  PAR CAN

# LIGHTING GRID – LOWER STUDIO



## LOWER STUDIO

- **FLOOR AREA**
- 10.8 METRES WIDE X 11.9 METRES LONG
- **RAISED AREA**
- 4 METRES WIDE X 6.1 METRES LONG
- **HEIGHT - VARIABLE**
- FROM 2.5 METRES TO 3.5 METRES
- **PORTABLE STAGING**
- 2 METRES LONG X 30 CM HIGH PROLYTE STAGEDEX (x 7)
- **ACCESS**
- LIFT – 1.9 METRES LONG X 1.9 METRES HIGH
- CORRIDOR DOORS – 1.3 METRES WIDE X 2 METRES HIGH

## STUDIO - CONTROL

- Roland M-380 Digital Sound Mixing Console – 8 inputs /outputs
- Roland S-1608 Digital Stage Box – 16 inputs / 8 outputs
- K-Array KK102 Column Speakers for Mid-Highs x 2
- K-Array KMT12 Subwoofers x 2
- K-Array Redline KRM33 Foldback Monitors x 2
- Tascam CD – 200i Player with iPod Dock



- ETC Nomad
- Zero 88 Jester ML24 Lighting Console with LED monitor
- Zero 88 Spice Rack Dimmer fed from 32A Single Phase Supply  
600w total load, 12 dimmable channels

## STUDIO – FIXTURES

- **CHAUVET PIXPAR 12 x 5**  
9 Channel Mode = Red, Green, Blue, Dimmer, Colour Temp, Strobe, Programs, Program Speed, Dimmer Curve
- **CHAUVET COLOURado LED Battens 72 Tour x 3**  
7 Channel Mode = Red, Green, Blue, Amber, Dimmer, Strobe
- **ShowTec Compact LED Lightset x 4**  
7 Channel Mode = Red, Green, Blue, Programs, Program Speed, Strobe, Dimmer
- **'THE STUDIO' – Lightbulb Logo Scenery (see below image)**
- **ETC Source 4 Jr 25° - 50° Profile x 5**
- **200mm Mirror ball with rotator**



# THE KENT ROOM

## INVENTORY

- Hitachi CP-A310N 3LCO Projector
- Motorised Screen – 1.8 m high x 1.8 m wide
- RCF 55W Speaker x 4
- Audio and Video relay from Main Auditorium

## DIMENSIONS

13.2 METRES LONG X 6.3 METRES WIDE (NOT INCLUDING BAR AREA)

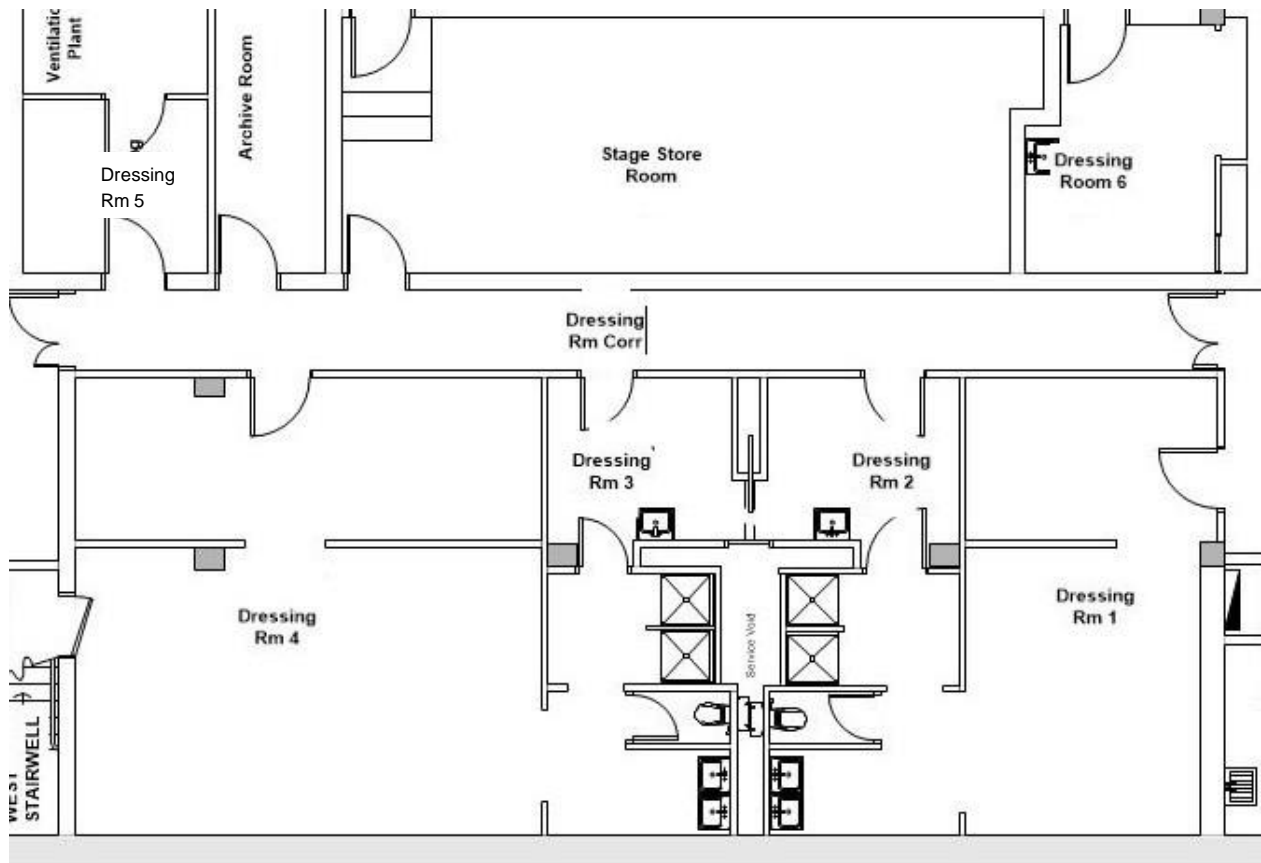
PERIMETER BENCH SEATING 70 CM WIDE

## ACCESS

MAIN ENTRANCE – 2 METRES HIGH X 1.7 METRES WIDE

GARDEN DOORS – 2.5 METRES HIGH X 1.25 METRES WIDE





# DRESSING ROOMS

DRESSING ROOMS 1, 2, 3 AND 4 ARE SEPARATED BY LOCKABLE PARTITION DOORS, THESE CAN OPEN TO BECOME A SINGLE 45 CAPACITY SPACE, FLEXIBLE TO YOUR NEEDS. DRESSING ROOMS INCLUDE CHAIRS, FULL-LENGTH MIRRORS, FRONT-LIT MAKE-UP MIRRORS, IRON, IRONING BOARD, MICROWAVE AND SHOW-AUDIO RELAY SPEAKERS THROUGHOUT. OUR LOWER STUDIO SPACE CAN ALSO BE USED AS A 100 CAPACITY DRESSING ROOM SPACE IF REQUIRED.

- **DRESSING ROOM 1**
- CAPACITY 15 – 5 M X 4.3 M  
1 X TOILET, 2 X SHOWER, 2 X BASIN
- **DRESSING ROOM 2**
- CAPACITY 2 – 2.5 M X 2.8 M  
1 X BASIN
- **DRESSING ROOM 3**
- CAPACITY 2 – 2.5 M X 2.8 M  
1 X BASIN
- **DRESSING ROOM 4**
- CAPACITY 25 – 7 M X 7 M  
1 X TOILET, 2 X SHOWER, 2 X BASIN
- **DRESSING ROOM 5**
- CAPACITY 2 – 2.5 M X 2.7 M
- **DRESSING ROOM 6**
- CAPACITY 3 – 3.3 M X 2.4 M  
1 X BASIN
- **COMPANY OFFICE – SL WING**
- CAPACITY 3 – 2.6 M X 1.7 M
- **WARDROBE**
- 2.6 M X 1.7 M



THE WOODVILLE  
GRAVESEND